

Study and Stay at Tyndale House, Cambridge

A guide for readers and residents



Welcome to Tyndale House

Tyndale House is a Cambridge-based research centre housing the only academic library in the UK focused entirely on biblical studies.

At the heart of Tyndale House is a residential community of scholars, working collaboratively in a mutually supportive environment. We offer private library desks and affordable accommodation for those working in biblical scholarship or related disciplines at a postgraduate or higher level.

Although priority for desks and accommodation is given for research that matches our charitable objects, we welcome applications from all scholars who would benefit from the use of our library.

See page 23 for further information on how to make a booking.



| | |
|-----------------------------------|----|
| Community at Tyndale House | 4 |
| Study in our library | 5 |
| Desk bookings | 6 |
| Residential life at Tyndale House | 7 |
| Facilities on site | 8 |
| The Tyndale House site | 9 |
| Single ensuite study bedrooms | 10 |
| Garden House | 12 |
| One-bedroom flats | 14 |
| Two-bedroom flats | 16 |
| Three-bedroom flats | 18 |
| Hawthorne House | 20 |
| Getting to Cambridge | 22 |
| Book your visit | 23 |

Tyndale House
36 Selwyn Gardens
Cambridge
CB3 9BA, UK
+44 (0) 1223 566601

Tyndale House is a company limited by
guarantee, registered in England and Wales:
Company No. 9437542 Reg. Charity No.
1161396 VAT Reg. No. GB 221 7195 27



Community at Tyndale House

Our community is made up of researchers from all levels: postgraduate students, career scholars, pastors and missionaries on sabbatical. We also employ a team of academics working on long-term projects. This makes our library a hub of biblical expertise and a vibrant research community that extends a warm welcome — whether you are with us for a day, or for a whole PhD.

Scholars and families participate in regular community events. During the day, we gather for daily coffee times and weekly chapel services. Readers and residents also organise reading groups, Bible studies, and barbecues. There are a variety of spaces available for community use, including common rooms, a garden, and a children's play area.

"At the heart of Tyndale House is a Christian community of scholars who seek to serve the Church through their work and to support and shape each other as they do it. We believe scholarship is better in community; it makes for better work and better scholars."

*Dr Peter J Williams,
Principal at
Tyndale House*



Study in our library

As the only academic library in the UK focused entirely on biblical studies, the Tyndale House Library is the perfect place for focused research and writing on the Bible. Our specialist collection includes over 50,000 volumes and readers have access to significant digital collections.

We have space for 58 scholars and welcome researchers from across the globe for short- and long-term stays. Each reader has a dedicated personal desk during their stay, including shelving to store books. Our collection is reference-only, which means the books stay in the library and are always available when they are needed, either from our shelves or from another reader's desk.

While we don't offer teaching or degree programmes ourselves, we are a ten-minute walk from the Cambridge University Library and a five-minute walk from the Cambridge Divinity Faculty.



Desk bookings

Desks are available Monday – Saturday from 8 am – 10 pm. If you require any assistance, highly qualified library staff are available Monday – Friday from 9 am – 5:30 pm.

Please check our website for more details on opening times: tyndalehouse.com/library/opening-hours.

Your desk booking includes an invitation to our regular coffee breaks, when researchers gather in a collaborative atmosphere to network and discuss their work.

Desk booking rates can be found at tyndalehouse.com/desk-rates



Residential life at Tyndale House

Staying on site at Tyndale House allows scholars to prioritise their research while participating in a vibrant community.

We have a limited range of accommodation available for both short- and long-term visits, including single ensuite study rooms, one-, two- and three-bedroom flats and a four-bedroom house. All accommodation is fully furnished. Kitchens are supplied with basic dinner service and cooking utensils, including pots and pans. More detailed information can be obtained on booking.

As a mutually benefitting community, we expect residents to serve on at least one rota (i.e. hospitality, security or gardening rotas) and to participate in extending a warm welcome to new readers and residents.

The cost of our accommodation varies and usually depends on the type of accommodation available (size, number of bedrooms, etc.). In order to live on site, residents must have a desk booked in the library for the duration of their stay. Accommodation bookings run on a weekly basis. There are no reductions for part-week stays. A week is counted from Monday at 12pm until Sunday at 6pm.

Booking rates for our accommodation can be found at tyndalehouse.com/booking-rates



Facilities on site

The Tyndale House garden offers an opportunity for fresh air and breaks from the library. The garden is often used for lunch breaks, an occasional croquet game, and community events during the spring and summer months.

There is a small shared children's play area at the back of the family flats opposite the Tyndale House garden. There are also several play parks in the area, and Lammas Land (a green area) is only a ten-minute walk away.

Bicycle parking is available for readers and residents on site. Unfortunately, there is no car parking for visitors, readers and residents at Tyndale House.

A large commercial-grade tumble dryer is available, at a subsidised rate, for the Tyndale House residents and is located by the family flats.



The Tyndale House site

Accommodation options include:

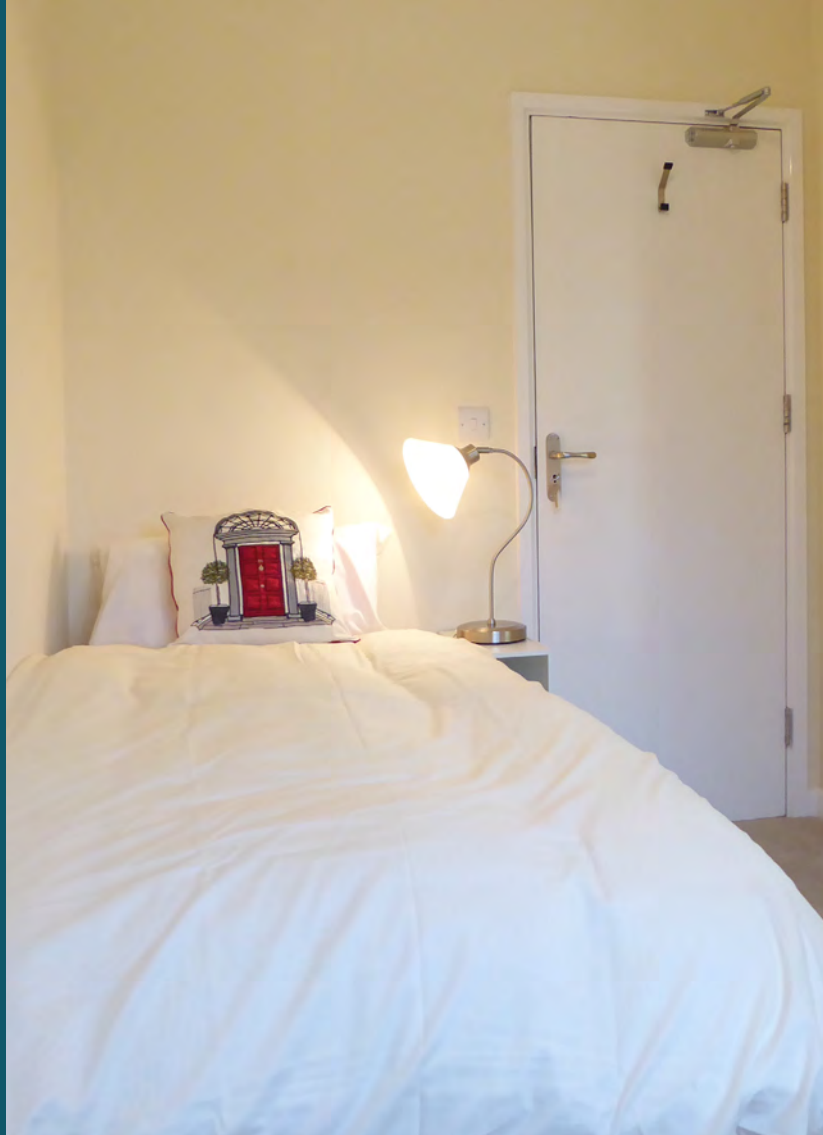
- Single ensuite study bedrooms
- One-bedroom flats
- Two-bedroom flats
- Three-bedroom flats
- Garden House
- Hawthorne House



12-minute walk to Cambridge centre
8-minute walk to University Library
5-minute walk to Divinity Faculty

Single ensuite study bedrooms

Our single ensuite study bedrooms are located above the library and are designed for short-term readers. Each room contains a single bed, study desk and ensuite bathroom. Residents are given access to a shared kitchen, common room and small dining room. Clean linen is supplied on a fortnightly basis and rooms are cleaned at least once per month by arrangement with the resident. Cleaning and linen fees are included in the room rate for these bedrooms.





Garden House

The Garden House is a one-bedroom, three-storey house suitable for short- and medium-term visitors to Tyndale House. The three floors are connected by a narrow spiral staircase.

Furniture inventory

Bedroom (first floor): Small double bed (4 foot 6 inches wide), wardrobe, bedside table, lamp and small chest of drawers.

Lounge (ground floor): two easy chairs, a coffee table, writing bureau and French doors to a small private garden area.

Kitchen-diner (basement): electric hob, electric oven, fridge, freezer, iron and board, washing machine plus small dining table and two dining chairs.

Bathroom (basement): shower, basin, toilet, mirror cabinet, towel rail, bathroom bin and light with bathroom socket.





One-bedroom flats

Our one-bedroom flats are located in the main building with access via the Tyndale House main entrance. Each one-bedroom flat consists of a living room, kitchen, bathroom and bedroom. Storage is provided with chests of drawers, bookshelves and cabinets, and many of the flats have additional built-in storage.

Furniture inventory

Living room and dining room: Sofa, armchair, coffee table, bookshelves, chest of drawers, dining table and chairs.

Kitchen: Fridge, freezer, microwave, oven with hob set, sink with drying space, iron and board, toaster and washing machine.

Bathroom: Shower, toilet, basin, wall mirror, mirror cabinet, towel rail, bathroom bin and light with bathroom socket.

Bedroom: Double bed (UK measurements), wardrobe, chest of drawers, bedside table and lamp.

Please note the inventory and size of the flats may vary.





Two-bedroom flats

Each two-bedroom flat consists of a living room, kitchen, bathroom and two bedrooms. Some flats have a combined kitchen and dining room whilst others have a combined living and dining room. There are either built-in or freestanding wardrobes in the flats. In addition, a variety of storage is provided in the form of chests of drawers, bookshelves and cabinets.

Furniture inventory

Living room: Sofa, coffee table, and bookshelves.

Kitchen and dining room: Fridge, freezer, microwave, oven with hob set, sink with drying space, iron and board, toaster, washing machine, dining table and chairs.

Bathroom: Shower, toilet, basin, wall mirror, mirror cabinet, towel rail, bathroom bin and light with bathroom socket.

Master bedroom: Double or king-size bed, wardrobe, chest of drawers, bedside table and lamps.

Twin bedroom: Twin beds, chest of drawers, bedside tables and lamps.





Three-bedroom flats

Each of the three-bedroom flats consists of a living room, kitchen, bathroom and three bedrooms. There is a master bedroom and, varying by flat, either two single bedrooms or a twin and a single. There are either built-in or freestanding wardrobes in the flats. In addition, a variety of storage is provided in the form of chest of drawers, bookshelves and cabinets.

Furniture inventory

Living room: Sofa, armchair, coffee table, bookshelves and chest of drawers.

Kitchen and dining room: Fridge, freezer, microwave, oven with hob set, sink with drying space, iron and board, toaster, washing machine, dining table and chairs.

Bathroom: Shower, toilet, basin, wall mirror, mirror cabinet, towel rail, bathroom bin and light with bathroom socket.

Master bedroom: King-size bed, wardrobe, chest of drawers, bedside table and lamps.

Twin bedroom: Twin beds, chest of drawers, bedside tables and lamps.

Single bedroom: Single bed, bedside table and lamps.





Hawthorne House

Hawthorne House is a four-bedroom, two-storey house suitable for families and groups of scholars. The house has a master bedroom, a twin bedroom and two single bedrooms.

Furniture inventory

Living room and dining room: Sofa, armchairs, coffee table, bookshelves, dining table with six chairs, and chest of drawers.

Kitchen and pantry: Grill, oven with hob set, toaster, microwave, under-counter fridge, washing machine, iron and board, coffee maker, kettle, and standing freezer.

Upstairs bathroom: Shower, bath, basin, wall mirror, cabinet, towel rail, light with bathroom socket and bathroom bin.

Upstairs toilet: Toilet.

Downstairs toilet: Toilet, basin, wall mirror, light with bathroom socket, tumble dryer and bathroom bin.

Master bedroom: King-size bed, wardrobe, chest of drawers, bedside tables and lamps.

Twin bedroom: Twin beds, wardrobe, chest of drawers, bedside table and lamp.

Single bedrooms: Single bed, desk, wardrobe, chest of drawers, bedside table and lamp.





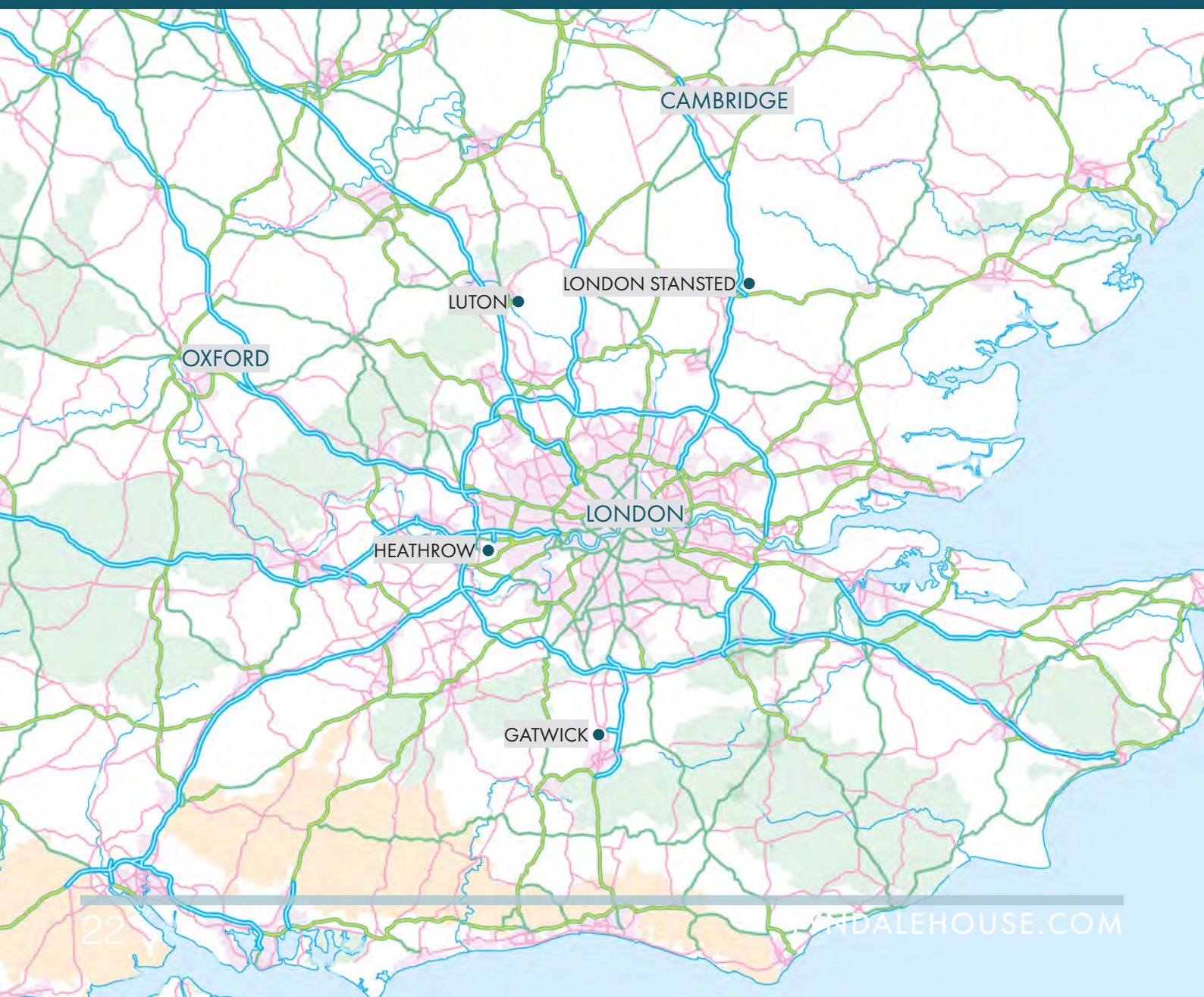
Getting to Cambridge

Rail

There is a direct line from Cambridge to London King's Cross. The station is a 35-minute walk from Tyndale House. There is a taxi rank outside the main station and buses run frequently between the station and city centre. The 'Universal' bus service route also stops close to Tyndale House (Cambridge Rugby Club).

Air

The nearest airports to Cambridge are Stansted and Luton. There is a direct train link to Cambridge from Stansted and Gatwick airports, and Heathrow airport is also easily accessible by train (via London King's Cross/London St Pancras). Coach services also regularly run from Stansted, Luton, Heathrow and Gatwick airports to the city centre and can be booked online in advance.



Book your visit

Although priority for desks and accommodation is given for research that matches with our charitable objects, we welcome applications from all scholars who would benefit from our library. We have a limited number of desks and accommodation available, so all bookings are subject to approval.

To view our booking rates, please see our webpage.

To request a booking, please complete our online form:

<https://portal.tyndale.cam.ac.uk/fmi/webd/BookingSystem>



Tyndale House
36 Selwyn Gardens
Cambridge
CB3 9BA, UK
+44 (0) 1223 566601

Tyndale House is a company limited by guarantee, registered in England and Wales:
Company No. 9437542 Reg. Charity No. 1161396 VAT Reg. No. GB 221 7195 27